



# NUMERICAL INDEX

HOLD DOWN ACTION HORIZONTAL HANDLE	
HH 150	2
HH 150-2S	2
HH 151-B	2
HH 151-B2S	2
HH 154-LE	2
HH 155-R	2
HH 250	3
HH 250-2S	3
HH 251-B	3
HH 251-B2S	3
HH 254-LE	3
HH 255-R	3
HH 300	4
HH 300-2S	4
HH 301-B	4
HH 301-B2S	4
HH 350	5
HH 350-2S	5
HH 351-B	5
HH 351-B2S	5
HH 350-S	5
HH 351-SB	5
HH 400	4
HH 400-2S	4
HH 401-B	4
HH 401-B2S	4
HH 450	6
HH 450-2S	6
HH 451-B	6
HH 451-B2S	6
HH 500	4
HH 500-2S	4
HH 501-B	4
HH 501-B2S	4
HH 550	6
HH 551-B	6
HH 551-BN	6
HH 600	4
HH 601-B	4
HOLD DOWN ACTION VERTICAL HANDLE	
HV 150	7
HV 150-2S	7
HV 151-B	7
HV 151-B2S	7
HV 151-BT	7
HV 152-T	7
HV 153-XL	7
HV 200	7
HV 200-2S	7
HV 250	8
HV 250-2S	8
HV 251-B	8
HV 251-B2S	8
HV 251-BT	8
HV 252-T	8
HV 250-U	8

HV 250-U2S	8
HV 251-UB	8
HV 251-UBT	8
HV 252-UT	8
HV 253-UL	8
HV 253-UL2S	8
HV 300	7
HV 300-2S	7
HV 350	9
HV 351-B	9
HV 351-BT	9
HV 351-BL	9
HV 351-BTL	9
HV 352-T	9
HV 352-TL	9
HV 353-L	9
HV 400	7
HV 400-2S	7
HV 450	10
HV 450-2S	10
HV 451-B	10
HV 451-B2S	10
HV 451-BT	10
HV 451-BL	10
HV 451-BTL	10
HV 452-T	10
HV 452-TL	10
HV 453-L	10
HV 453-XL	10
HV 550	11
HV 551-B	11
HV 551-BT	11
HV 552-T	11
HV 650	12
HV 651-B	12
HV 651-BT	12
HV 652-T	12
HV 750	13
HV 751-B	13
HV 850	13
HV 851-B	13
HV 950	13
HV 951-B	13
HV 1050	13
HV 1051-B	13
SPECIAL HOLD DOWN ACTION CLAMPS	
SF 350	14
UF 450	14
No. 82	14
No. 82-S	14
No. 38B(S)	15
No. 38S(S)	15
No. 38B(L)	15
No. 38S(L)	15
No. 42A	16
No. 42A-2S	16
No. 42K	16
No. 42K-2S	16

No. 42P	16
No. 42S	16
PULL/FASTEN ACTION	
PA 150	17
PA 170	17
PA 250	17
PA 250-2S	17
PA 251-B	17
PA 251-B2S	17
PA 270	17
PA 350	17
FA 100	18
FA 100-2S	18
FA 102	19
FA 102-2S	19
FA 130	19
FA 130-2S	19
FA 140	20
FA 140-2S	20
FA 200	18
FA 200-2S	18
FA 202	19
FA 202-2S	19
FA 230	19
FA 230-2S	19
FA 240	20
FA 240-2S	20
FA 300	18
FA 300-2S	18
FA 302	19
FA 330	19
FA 340	20
FA 600	20
FA 601-B	21
FA 700	21
STRAIGHT LINE ACTION	
SL 07	22
SL 10	22
SL 10-2S	22
SL 15-2	22
SL 15-22S	22
SL 70	23
SL 70-2S	23
SL 100	23
SL 105-2	24
SL 105-22S	24
SL 110	24
SL 111-B	24
SL 150	25
SL 160	25
SL 200	23
SL 210	26
SL 240	26
SL 241-B	26
SL 250	27
SL 251-B	27
SL 300	23
SL 310	27
SL 350	27

SL 450	27
No. 02	28
No. 51	28
FM 50	29
FM 50-2S	29
FM 150	29
FM 150-2S	29
FM 150-1	29
FM 250	29
SQUEEZE ACTION	
SA 2	30
SA 150	30
SA 155-2	30
SA 250	31
SA 255-2	31
SA 350	31
SA 450	32
SA 455-2	32
SA 550	32
HOLD DOWN HEAVY DUTY (Profile)	
V. 1	34
V. 1-SB	35
V. 2	34
V. 2-SB	35
V. 3	34
V. 1X	36
V. 1X-B	37
V. 2X	36
V. 2X-B	37
V. 3X	36
V. 3X-B	37
AIR CLAMP	
AC 250	38
AC 350	38
AC 353-L	38
AC 450	39
AC 453-L	39
AC 550	39
AC 650	40
AC 100-SL	41
AC 350-SL	41
Accessories	42
Cross Reference	43

# Horizontal Handle



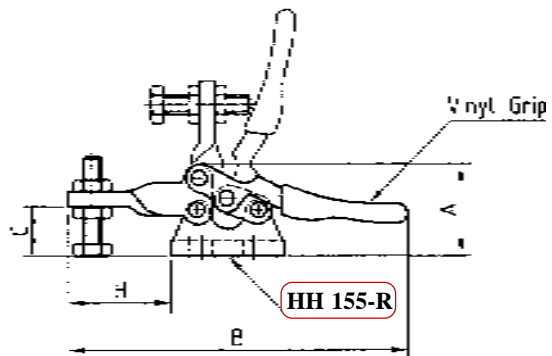
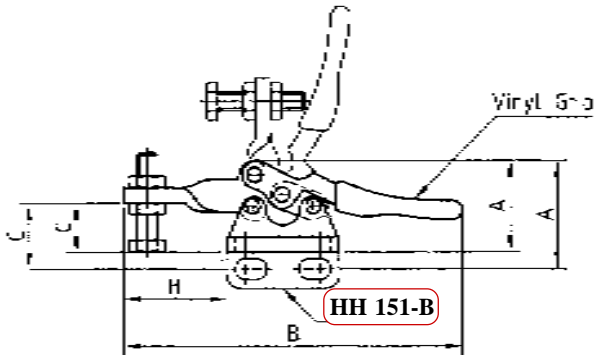
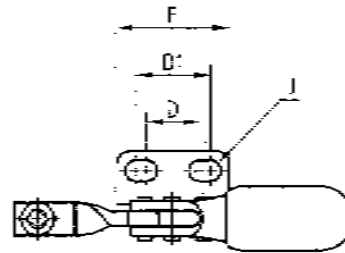
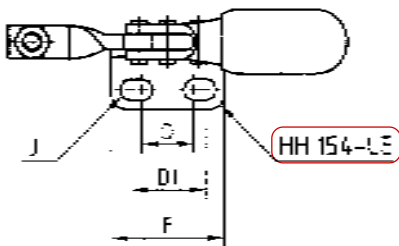
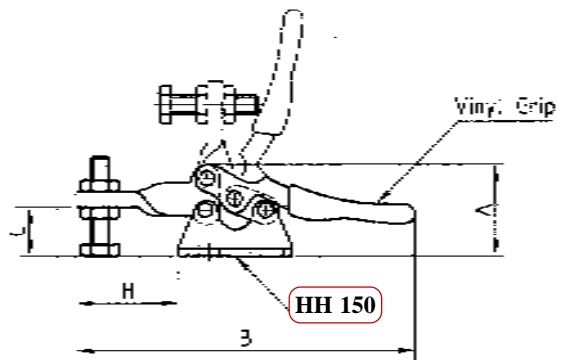
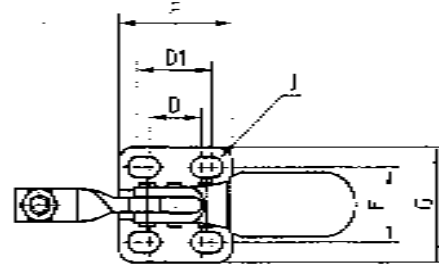
# HOLD DOWN ACTION

## Series HH 150

This is a smallest horizontal handle hold-down clamp. Ideal for light weight materials and light work production or assembly operations. Solid bar with fixed spindle position furnished with M4 nylon hex head spindle and red vinyl handle grip but stainless steel models supplied with stainless steel hex head spindles.



Also Available in  
Stainless Steel  
HH 150-2S  
HH 151-B2S



Model	A	B	C	D	D1	E	F	G	H	J/SLOT	Holding Capacity	Shipping Weight	Handle Moves	Bar moves
HH 150	19	72	10.3	11.1	15.9	15.9	24.3	24.3	22	4.4 x 6.7	27 Kg	27 g	70°	90°
HH 151-B	23	72	14	11.1	15.9	-	24.3	-	22	4.4 x 6.7	27 Kg	27 g	70°	90°
HH 155-R	19	72	10.3	11.1	15.9	-	24.3	-	22	4.4 x 6.7	27 Kg	27 g	70°	90°
HH 154-LE	19	72	10.3	11.1	15.9	-	24.3	-	22	4.4 x 6.7	27 Kg	27 g	70°	90°

# Horizontal Handle



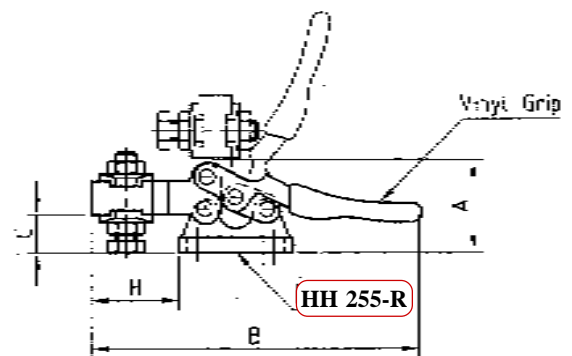
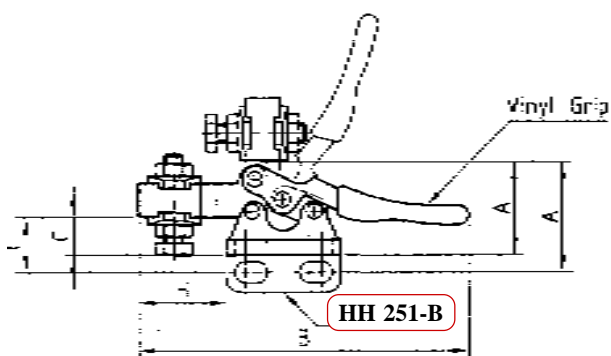
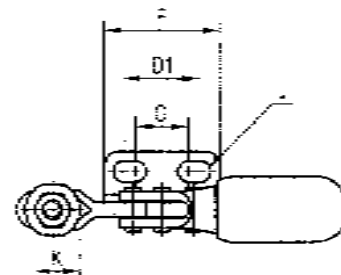
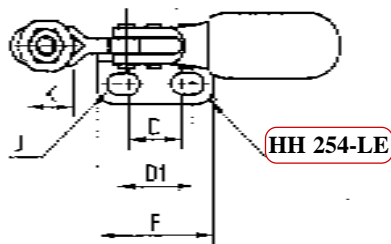
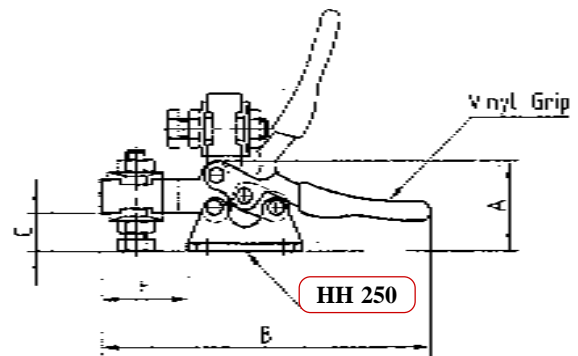
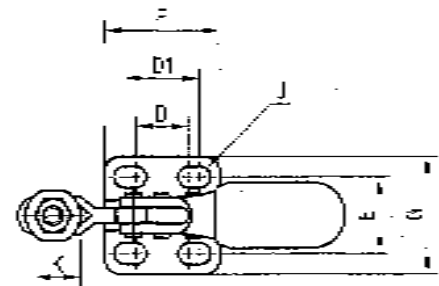
# HOLD DOWN ACTION

## Series HH 250

The smallest horizontal handle hold-down U-bar clamp supplied with M4 nylon hex head spindle adjustable and 2 flanged washers. Red vinyl handle grip provided for handle comfort. Stainless steel models are supplied with stainless steel hex head spindle assemblies.



Also Available in  
Stainless Steel  
HH 250-2S  
HH 251-B2S



Model	A	B	C	D	D1	E	F	G	H	J/SLOT	K	Holding Capacity	Shipping Weight	Handle Moves	Bar moves
HH 250	19	69	7.9	11.1	15.9	15.9	24.3	24.3	19	4.4 x 6.7	9.6	27 Kg	27 g	70°	90°
HH 251-B	23	69	12.1	11.1	15.9	-	24.3	-	19	4.4 x 6.7	9.6	27 Kg	27 g	70°	90°
HH 254-LE	19	69	7.9	11.1	15.9	-	24.3	-	19	4.4 x 6.7	9.6	27 Kg	27 g	70°	90°
HH 255-R	19	69	7.9	11.1	15.9	-	24.3	-	19	4.4 x 6.7	9.6	27 Kg	27 g	70°	90°

# Horizontal Handle



# HOLD DOWN ACTION

## HH 300, HH 400, HH 500, HH 600

These series offer in four different standard sizes. They are designed to provide more hand clearance when clamps are in full open position. Each model is equipped with red vinyl handle grip. Stainless Steel models are supplied with stainless steel hex head spindle assemblies.

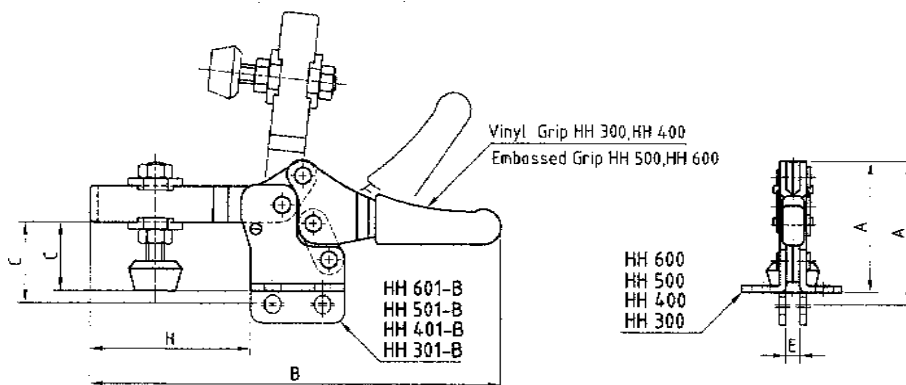
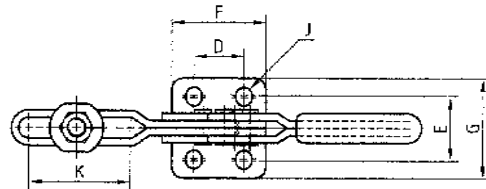


### Also Available in Stainless Steel

HH 300-2S    HH 400-2S  
HH 301-B2S    HH 401-B2S  
HH 500-2S  
HH 501-B2S

### Straight Base

HH 301-B  
HH 401-B  
HH 501-B  
HH 601-B



Model	A	B	C	D	E	F	G	H	J/SLOT	K	Holding Capacity	Shipping Weight	Handle Moves	Bar moves
HH 300	35.5	111	18.5	13.5	17.6	25.4	27	43.4	4.4 x 5.2	27.5	68 Kg	80 g	55°	96°
HH 301-B	38.5	111	21.2	13.5	4	25.4	-	43.4	4.4 x 5.2	27.5	68 Kg	80 g	55°	96°
HH 400	49.4	160.5	24	26	28	37.4	38.6	61.8	5.5 x 8.5	40	90 Kg	205 g	55°	96°
HH 401-B	55.4	160.5	30	26	5.2	37.4	-	61.8	5.5 x 8.5	40	90 Kg	205 g	55°	96°
HH 500	61.8	195	34	26	31	40	43.6	67.3	6.6 x 9.1	33	227 Kg	322 g	55°	96°
HH 501-B	66.8	195	39	26	6.4	40	-	67.3	6.6 x 9.1	33	227 Kg	322 g	55°	96°
HH 600	80.8	270	44.5	41	43	57	58	103	8 x 10	70	340 Kg	725 g	55°	96°
HH 601-B	89.5	270	53.5	41	8	57	-	103	8 x 10	70	340 Kg	725 g	55°	96°

# Horizontal Handle



# HOLD DOWN ACTION

## Series HH 350 HH 350-S

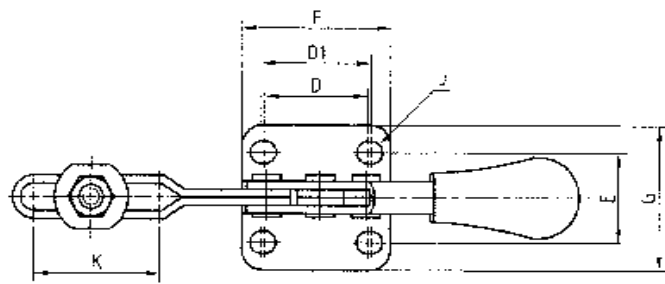
Two different bar styles of medium duty clamp make the spindle position adjustable and fixed(HH 350-S). The Solid Bar style, HH 350-S is equipped with Bolt Retainer. Red vinyl handle grips are provided for handle comfort. Stainless steel models are provided with stainless steel hex head spindle assemblies.



**HH 350-S  
Solid Bar**

**HH 350  
U-Bar**

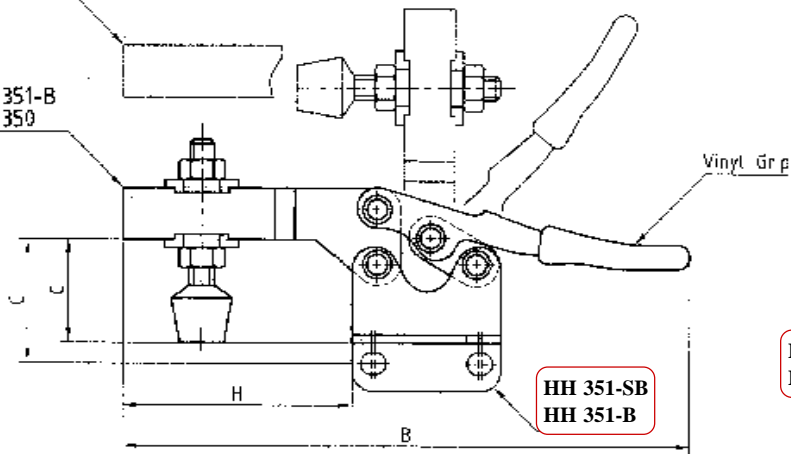
Also Available in  
Stainless Steel  
HH 350-2S  
HH 351-B2S



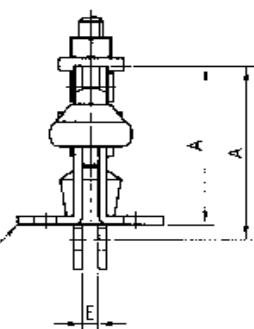
Straight Base  
HH 351-B  
HH 351-SB

HH 351-SB  
HH 350-S

HH 351-B  
HH 350



**HH 350-S  
HH 350**



Model	A	B	C	D	D1	E	F	G	H	J/SLOT	K	Holding Capacity	Shipping Weight	Handle Moves	Bar moves
<b>HH 350</b>	38.1	139.6	25.4	25.4	27	22.2	36.6	35.7	56.5	5.2 x 6.	31	90 Kg	125 g	60°	90°
<b>HH 351-B</b>	43.3	139.6	30.6	25.4	27	4	36.6	-	56.5	5.2 x 6	31	90 Kg	125 g	60°	90°
<b>HH 350-S</b>	38.1	139.6	25.4	25.4	27	22.2	36.6	35.7	56.5	5.2 x 6	-	90 Kg	125 g	60°	90°
<b>HH 351-SB</b>	43.3	139.6	30.6	25.4	27	4	36.6	-	56.5	5.2 x 6	-	90 Kg	125 g	60°	90°

# Horizontal Handle



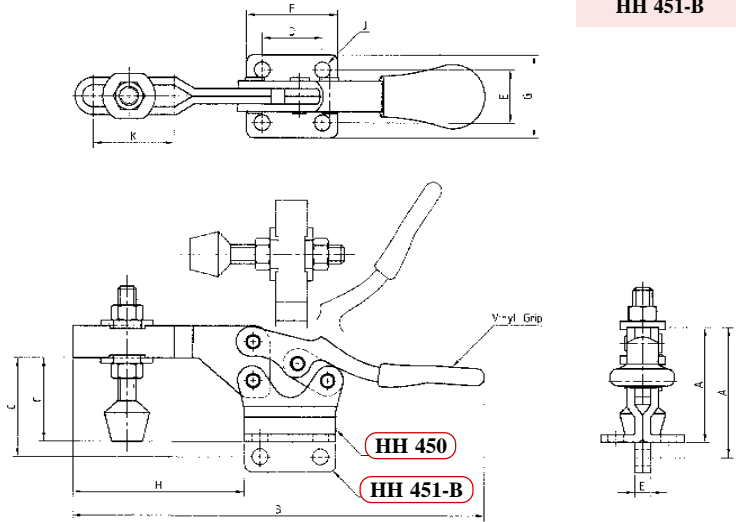
# HOLD DOWN ACTION

## HH 450

Provides a larger in dimension and holding capacity. Equipped with a red vinyl handle grip.



Also Available in  
Stainless Steel  
HH 450-2S  
HH 451-B2S



Straight Base  
HH 451-B

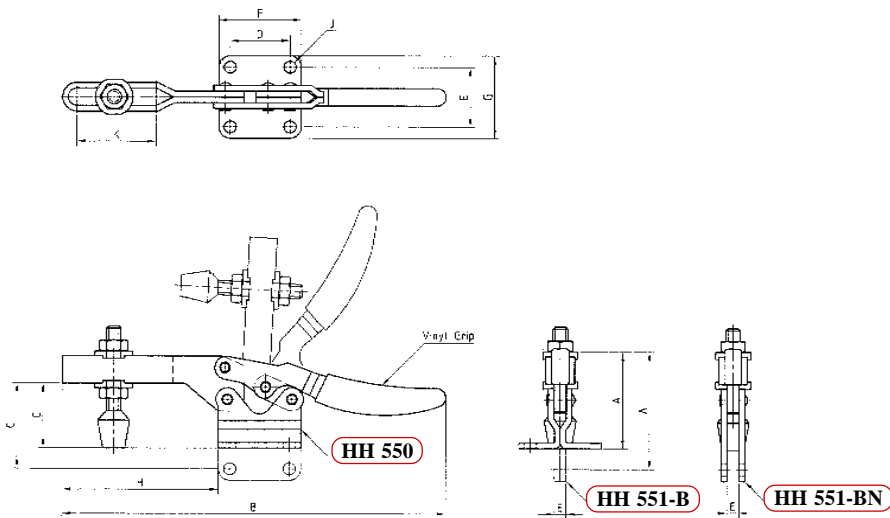
Model	A	B	C	D	E	F	G	H	J	K	Holding Capacity	Shipping Weight	Handle Moves	Bar moves
HH 450	48.4	173.4	34.9	25.4	22.2	38.5	34.8	72.4	6.7	34	240 Kg	274 g	60°	90°
HH 451-B	54.8	173.4	41.3	25.4	6.4	38.5	-	72.4	6.7	34	240 Kg	274 g	60°	90°

## Series HH 550

One of the two largest horizontal U-Bar clamps is equipped with red vinyl handle grip. There are two different types of Straight Base model.



Straight Base  
HH 551-B  
HH 551-BN



Model	A	B	C	D	E	F	G	H	J	K	Holding Capacity	Shipping Weight	Handle Moves	Bar moves
HH 550	63.5	265	44.5	41.2	41.2	57.2	57.2	108	8.3	54.5	340 Kg	686 g	65°	93°
HH 551-B	77.8	265	58.8	41.2	8	57.2	-	108	8.3	54.5	340 Kg	686 g	65°	93°
HH 551-BN	78.4	265	59.3	41.2	8	57.2	-	108	8.3	54.5	340 Kg	686 g	65°	93°

# Vertical Handle



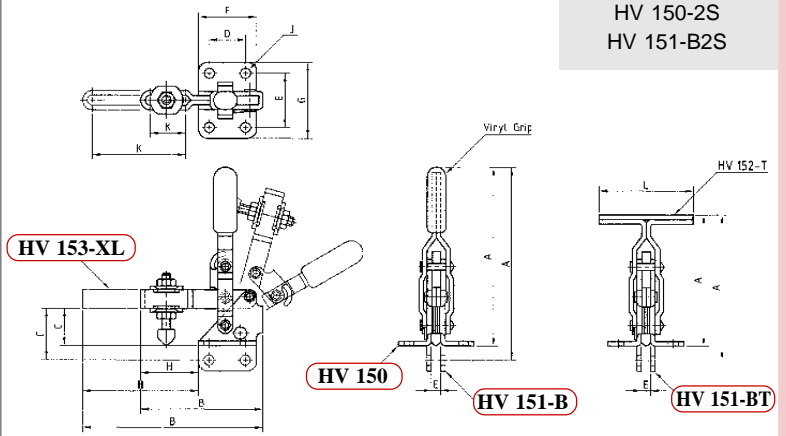
# HOLD DOWN ACTION

## Series HV 150

The smallest vertical handle clamp is applicable for light duty. Supplied with vinyl-coated hex-head spindle assemblies and two flanged washers. Red vinyl handle grips are provided except T-Bar model. Stainless steel models are supplied with stainless steel hex head spindle assemblies.



Also Available in  
Stainless Steel  
HV 150-2S  
HV 151-B2S



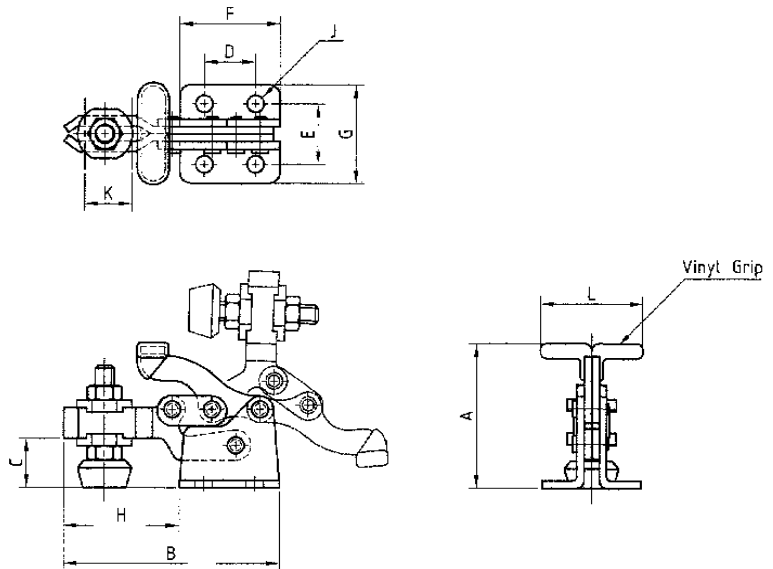
Model	A	B	C	D	E	F	G	H	J	K	L	Holding Capacity	Shipping Weight	Handle Moves	Bar moves
<b>HV 150</b>	78.5	53.9	15.9	15.9	23.8	25.5	33.4	25.5	4.4	15.5	-	45 Kg	66 g	60°	105°
<b>HV 151-B</b>	84.2	53.9	22.6	15.9	4	25.5	-	25.5	4.4	15.5	-	45 Kg	66 g	60°	105°
<b>HV 151-BT</b>	64.1	53.9	22.6	15.9	4	25.5	-	25.5	4.4	15.5	46	45 Kg	70 g	60°	105°
<b>HV 152-T</b>	57.7	53.9	15.9	15.9	23.8	25.5	33.4	25.5	4.4	15.5	46	45 Kg	70 g	60°	105°
<b>HV 153-XL</b>	78.5	79.4	15.9	15.9	23.8	25.5	33.4	51	4.4	42	-	27 Kg	80 g	60°	105°

## HV 200 HV 300 HV 400

The unique handle is special designed that can also be operated from behind. Each model is provided with red vinyl handle grip and furnished with spindle assemblies and two flanged washers. Stainless steel models are supplied with stainless steel hex head spindle assemblies.



Also Available in  
Stainless Steel  
HV 200-2S  
HV 300-2S  
HV 400-2S



Model	A	B	C	D	E	F	G	H	J	K	L	Holding Capacity	Shipping Weight	Handle Moves	Bar moves
<b>HV 200</b>	38.1	57.1	13	13.5	16	26.5	26	30.6	4.5	12.7	27	68 kg	58 g	175°	92°
<b>HV 300</b>	62.5	93.5	22	23	29	44	46	49.5	6.5	19	50	150 Kg	220 g	175°	92°
<b>HV 400</b>	93.5	130.5	33	35	38	64	63	66.5	8.5	27	70	340 Kg	630 g	175°	92°

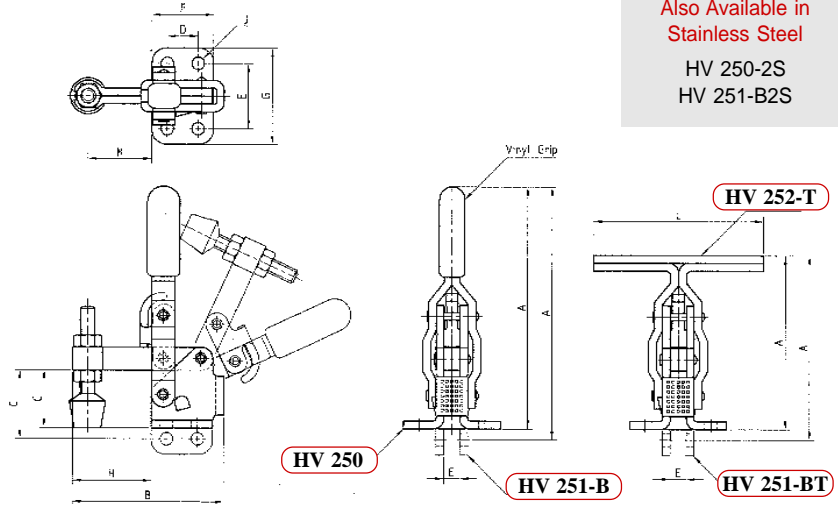
# Vertical Handle



# HOLD DOWN ACTION

## Series HV 250

The spindle position is fixed for solid bar series. Straight Base and T-Handle models are also available. Red vinyl handle grips are provided except T-Bar model. Stainless steel models are supplied with stainless steel hex head spindle assemblies.



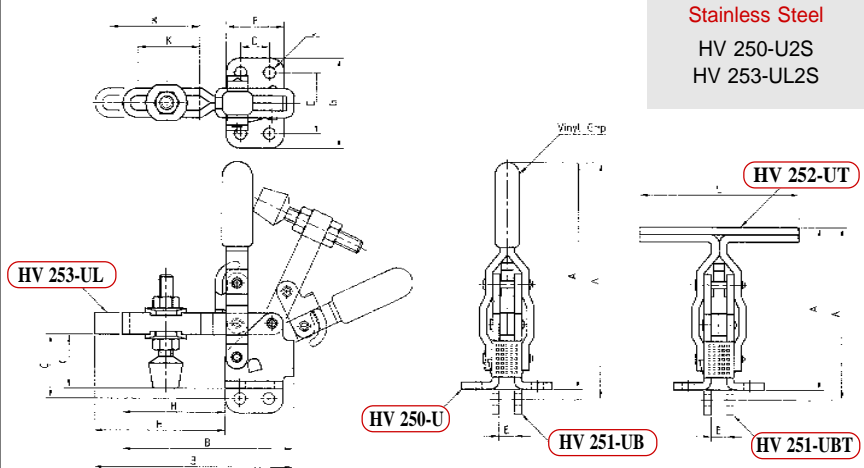
Also Available in Stainless Steel

- HV 250-2S
- HV 251-B2S

Model	A	B	C	D	E	F	G	H	J	K	L	Holding Capacity	Shipping Weight	Handle Moves	Bar moves
<b>HV 250</b>	100	62.5	23.8	12.7	27	25.5	39.8	32.5	5.2	26.3	-	90 Kg	167 g	65°	115°
<b>HV 251-B</b>	104.5	62.5	28.5	12.7	6.4	25.5	-	32.5	5.2	26.3	-	90 Kg	167 g	65°	115°
<b>HV 251-BT</b>	76.2	62.5	28.5	12.7	6.4	25.5	-	32.5	5.2	26.3	70	90 Kg	170 g	65°	115°
<b>HV 252-T</b>	71.8	62.5	23.8	12.7	27	25.5	39.8	32.5	5.2	26.3	70	90 Kg	170 g	65°	115°

## Series HV 250-U

Similar dimension to HV 250 but spindle position is adjustable along the U-Bar. Each model is equipped with red vinyl handle grip except T-Handle model. Stainless steel models are provided with stainless steel hex head spindle assemblies.



Also Available in Stainless Steel

- HV 250-U2S
- HV 253-UL2S

Model	A	B	C	D	E	F	G	H	J	K	L	Holding Capacity	Shipping Weight	Handle Moves	Bar moves
<b>HV 250-U</b>	100	75.6	23.8	12.7	27	25.5	39.8	45.6	5.2	27.5	-	90 Kg	167 g	65°	115°
<b>HV 251-UB</b>	104.5	75.6	28.5	12.7	6.4	25.5	-	45.6	5.2	27.5	-	90 Kg	167 g	65°	115
<b>HV 251-UBT</b>	76.2	75.6	28.5	12.7	6.4	25.5	-	45.6	5.2	27.5	70	90 Kg	170 g	65°	115°
<b>HV 252-UT</b>	71.8	75.6	23.8	12.7	27	25.5	39.8	45.6	5.2	27.5	70	90 Kg	170 g	65°	115°
<b>HV 253-UL</b>	100	87.8	23.8	12.7	27	25.5	39.8	57.8	5.2	39.7	-	50 Kg	170 g	65°	115°

# Vertical Handle



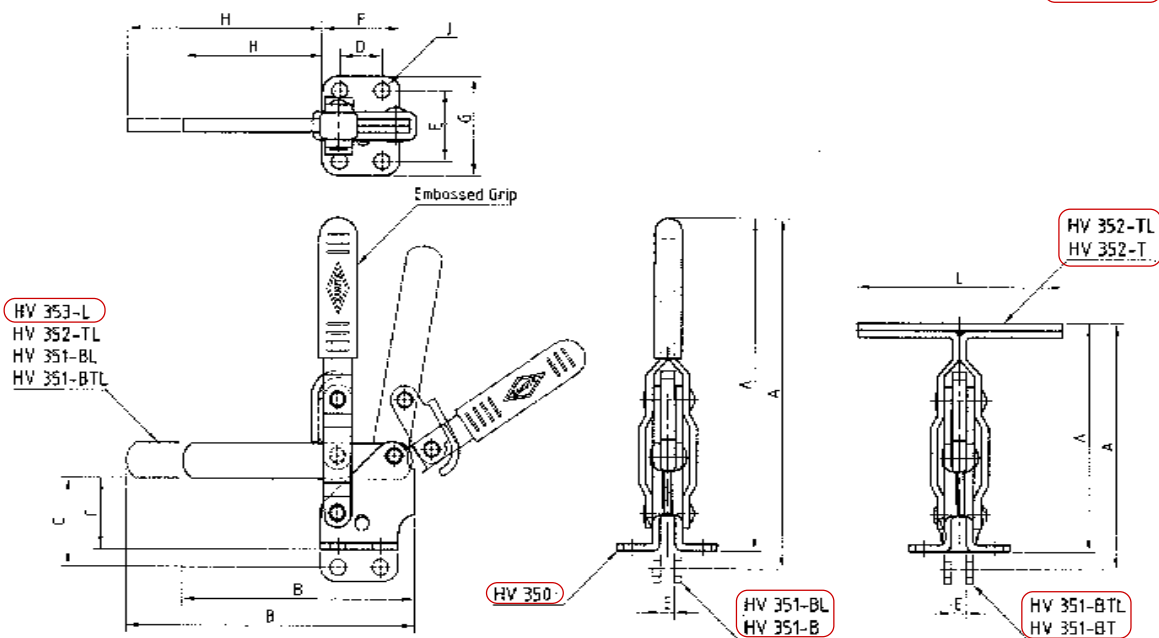
# HOLD DOWN ACTION

## Series HV 350

Two standard models are identical. HV 350, the solid bar model is furnished with bolt retainer. Embossed red handle grip provided.



HV 350  
Solid Bar



Model	A	B	C	D	E	F	G	H	J	L	Holding Capacity	Shipping Weight	Handle Moves	Bar moves
HV 350	149	104.5	31.8	19	31.8	35	44.6	62	7.1	-	225 Kg	350 g	60°	100°
HV 351-B	157.2	104.5	39.7	19	6.4	35	-	62	7.1	-	225 Kg	350 g	60°	100°
HV 351-BT	109.6	104.5	39.7	19	6.4	35	-	62	7.1	92	225 Kg	370 g	60°	100°
HV 351-BL	157.2	129.8	39.7	19	6.4	35	-	87.3	7.1	-	110 Kg	380 g	60°	100°
HV 351-BTL	109.6	129.8	39.7	19	6.4	35	-	87.3	7.1	92	110 Kg	390 g	60°	100°
HV 352-T	101.7	104.5	31.8	19	31.8	35	44.6	62	7.1	92	225 Kg	370 g	60°	100°
HV 352-TL	101.7	129.8	31.8	19	31.8	35	44.6	87.3	7.1	92	110 Kg	390 g	60°	100°
HV 353-L	149	129.8	31.8	19	31.8	35	44.6	87.3	7.1	-	110 Kg	380 g	60°	100°

# Vertical Handle

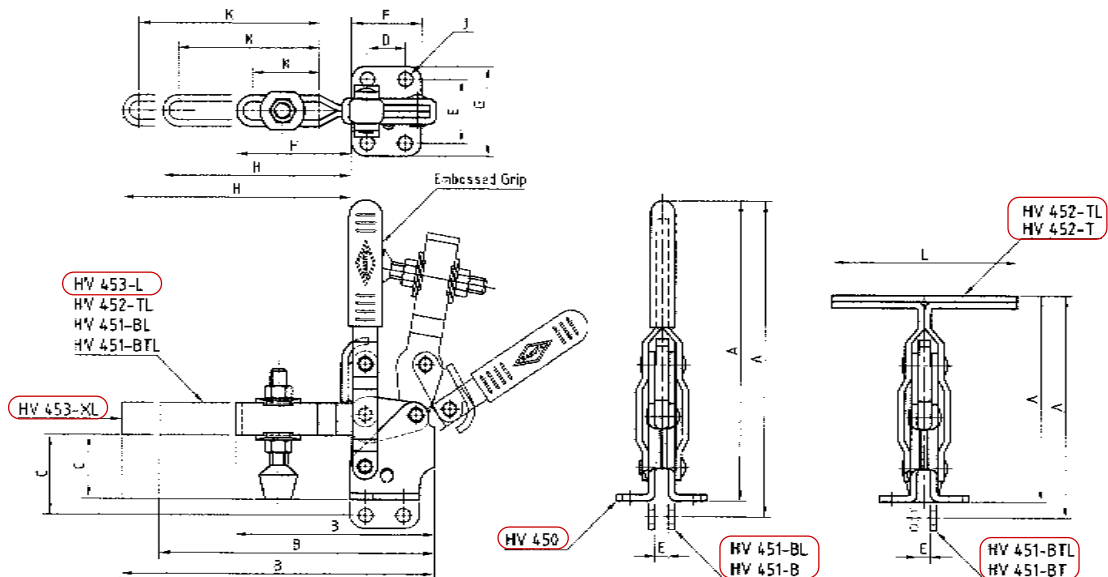


# HOLD DOWN ACTION

## Series HV 450

Similar to HV350 except U-bar. Provided embossed grip and furnished with spindle assemblies/flanged washers. Stainless steel supplied with stainless steel hex head spindle assemblies.

Also Available in  
stainless steel  
HV450-2S  
HV451-B2S



Model	A	B	C	D	E	F	G	H	J	K	L	Holding Capacity	Shipping Weight	Handle Moves	Bar moves
<b>HV 450</b>	149	99.7	31.8	19	31.8	35	44.6	57.2	7.1	33.5	-	225 Kg	350 g	60°	100°
<b>HV 451-B</b>	157.2	99.7	39.7	19	6.4	35	-	57.2	7.1	33.5	-	225 Kg	350 g	60°	100°
<b>HV 451-BT</b>	109.6	99.7	39.7	19	6.4	35	-	57.2	7.1	33.5	92	225 Kg	370 g	60°	100°
<b>HV 451-BL</b>	157.2	137.7	39.7	19	6.4	35	-	95.2	7.1	71	-	100 Kg	380 g	60°	100°
<b>HV 451-BTL</b>	109.6	137.7	39.7	19	6.4	35	-	95.2	7.1	71	92	100 Kg	400 g	60°	100°
<b>HV 452-T</b>	101.7	99.7	31.8	19	31.8	35	44.6	57.2	7.1	33.5	92	225 Kg	370 g	60°	100°
<b>HV 452-TL</b>	101.7	137.7	31.8	19	31.8	35	44.6	95.2	7.1	71	92	100 Kg	400 g	60°	100°
<b>HV 452-L</b>	149	137.7	31.8	19	31.8	35	44.6	95.2	7.1	71	-	100 Kg	380 g	60°	100°
<b>HV 453-XL</b>	149	156.5	31.8	19	31.8	35	44.6	114	7.1	90	-	80 Kg	440 g	60°	100°

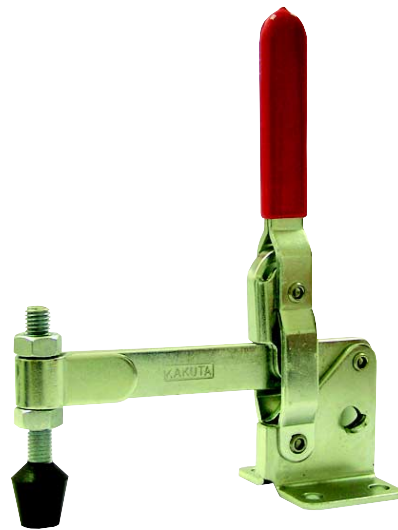
# Vertical Handle



# HOLD DOWN ACTION

## Series HV 550

Two standard models, HV 550 and HV 650 are identical. Bolt retainer furnished with solid bar model, HV 550. Embossed red handle grip provided except T-bar model.

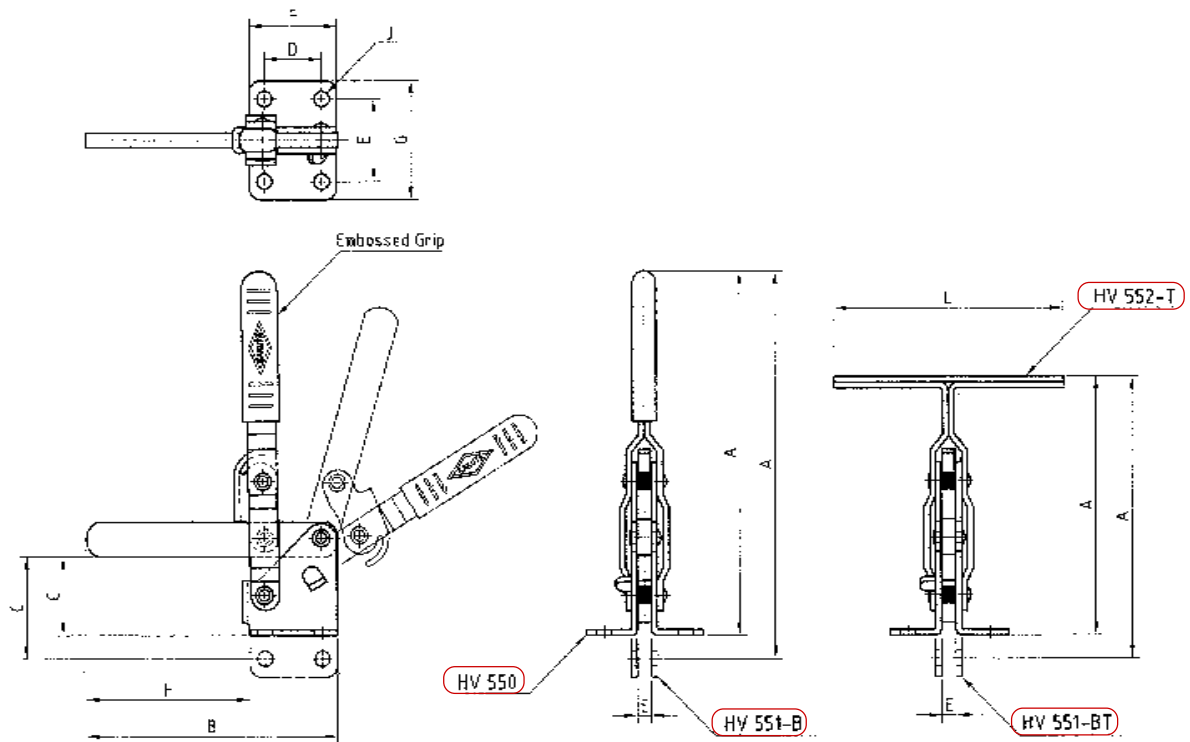


HV 550  
Solid Bar

HV 551-B  
Straight Base

HV 551-BT  
Straight Base/T-Handle

HV 552-T  
T-Handle



Model	A	B	C	D	E	F	G	H	J	L	Holding Capacity	Shipping Weight	Handle Moves	Bar moves
HV 550	199	139.4	42.9	31.8	45.2	48.4	65.2	91	8.4	-	340 Kg	660 g	58°	106°
HV 551-B	212	139.4	55.6	31.8	8	48.4	-	91	8.4	-	340 Kg	660 g	58°	106°
HV 551-BT	154	139.4	55.6	31.8	8	48.4	-	91	8.4	127	340 Kg	660 g	58°	106°
HV 552-T	141	139.4	42.9	31.8	45.2	48.4	65.2	91	8.4	127	340 Kg	660 g	58°	106°

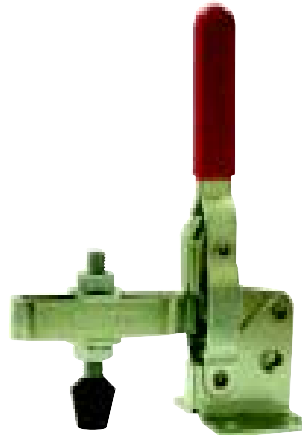
# Vertical Handle



# HOLD DOWN ACTION

## Series HV 650

Similar to HV550 except U-bar. HV 650, the U-bar model equipped with 2 flanged washers and spindle assemblies. Embossed red handle grip also provided except T-bar model.

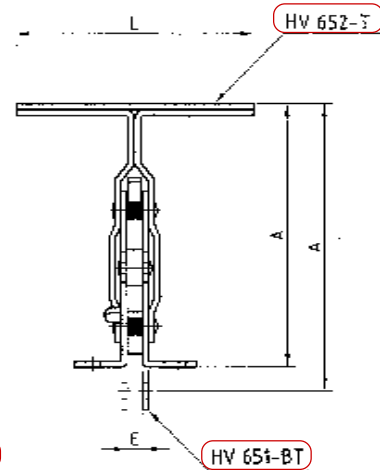
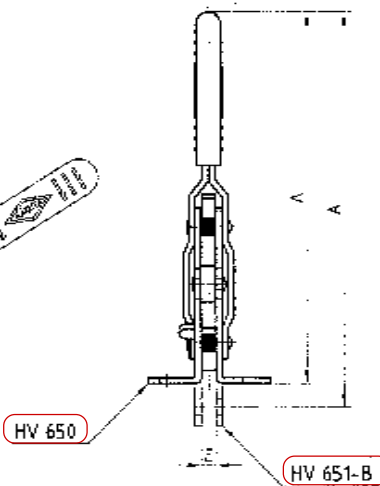
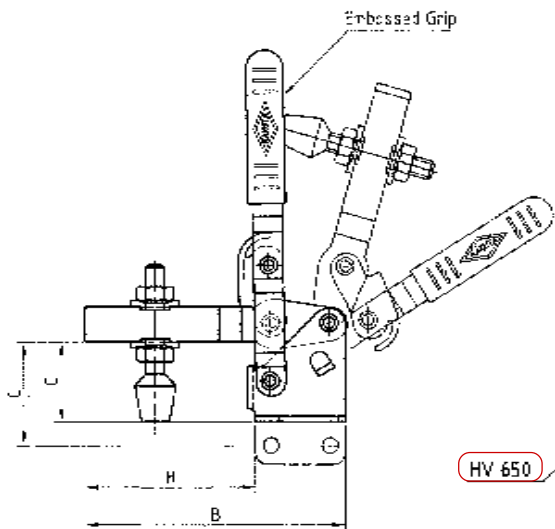
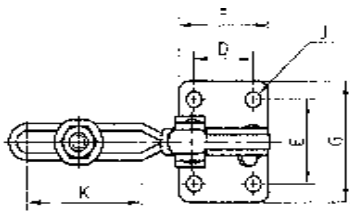


HV 650  
U-bar

HV 651-B  
Straight Base

HV 651-BT  
Straight Base/T-Handle

HV 652-T  
T-Handle



Model	A	B	C	D	E	F	G	H	J	K	L	Holding Capacity	Shipping Weight	Handle Moves	Bar moves
<b>HV 650</b>	199	139.4	42.9	31.8	45.2	48.4	65.2	91	8.4	61	-	340 Kg	660 g	58°	106°
<b>HV 651-B</b>	212	139.4	55.6	31.8	8	48.4	-	91	8.4	61	-	340 Kg	660 g	58°	106°
<b>HV 651-BT</b>	154	139.4	55.6	31.8	8	48.4	-	91	8.4	61	127	340 Kg	660 g	58°	106°
<b>HV 652-T</b>	141	139.4	42.9	31.8	45.2	48.4	65.2	91	8.4	61	127	340 Kg	660 g	58°	106°